

SKANSKA SVERIGE AB

UN/EDIFACT Message: Segment details

Implementation Guide for INVOICE / CREDIT NOTE

Between
Skanska Sverige AB
and
Suppliers

EDIFACT Message:	Invoice
EDIFACT Version:	D
EDIFACT Release:	96A
Version:	1.7.6
Date:	2011-01-14

SKANSKA SVERIGE AB

UN/EDIFACT Message: Segment details

Overview

The invoice message is intended for invoicing under a commercial agreement between two parties, the Buyer and the Seller.

This document builds upon the standard for electronic commerce MAM 7.0 (“Material Administrative Message”), developed by the BEAst association (short for Building and Properties Sector Electronic Business Standard). More information is available from www.beast.se.

Every segment in the invoice message is described separately. The segment is designated by its “tag”, expressed in three letters. The specification in the column UN/EDIFACT describes what is allowed under the standard, and in the column Implementation how Skanska has chosen to apply the standard.

The following codes describes the requirements for each segment respectively. The codes are specified for group (e.g. SG33), segment (e.g. MOA), composite (e.g. CS516) and element (e.g. 5025) level.

M	Mandatory	Always required
R	Required	Always required
D	Dependent	Usage is dependant on particular circumstances
C	Conditional	Conditional use
N	Not Used	Not used

General background

The creation of an EDIFACT segment is strictly based on the element application status.

Numeric elements that are mandatory must contain a specific numeric value.

Alphanumeric elements that are mandatory must contain a non-empty value or a specific value. Only space characters are not allowed.

If decimals are present in amounts and quantities, the number must be divided by a decimal point.

SKANSKA SVERIGE AB

UN/EDIFACT Message: Segment details

Skanska stipulates the right to reject invoices that deviates from the requirements in this specification.

SKANSKA SVERIGE AB

UN/EDIFACT Message: Segment details

Change Log

The following changes has been made between version 1.2 and 1.3

Group	Segment	Qualifier	Element	Change
-	PAI	-		Segment removed
2	NAD	BY	3055	Value 92 added
2	NAD	SE	3055	Value 92 added
3	RFF	GN	1153	Qualifier GN removed
15	ALC		1230	Element 1230 added
15	ALC		1227	Value 1 – 4 added
15	ALC		7161	Code "PO" added
15	ALC		7160	Element 7160 added
19	MOA		5025	Qualifier 23 and 203 removed Qualifier 8 added
25	LIN		7143	Code changed to "EN"
25	PIA		7143	Code changed to "IN" and "SA"
38	ALC		1227	Value 1 – 4 added
38	ALC		7160	Element 7160 added
41	MOA		5025	Qualifier 23 and 203 removed Qualifier 8 added
41	MOA		5025	Qualifier removed: 9, 125, 131 Qualifier removed: 77, 259, 260

The following changes has been made between version 1.3 and 1.4

Group	Segment	Qualifier	Element	Change
1	RFF	ADE		Qualifier removed
5	NAD-BY CTA			Group status changed from "R" to "D"
2	NAD	DP, IV, PE		Qualifiers removed
33	TAX			Group status changed from "R" to "D"
41	MOA			Group status changed from "R" to "D"
43	TAX			Group status changed from "R" to "D"

The following changes has been made between version 1.4 and 1.5

Group	Segment	Qualifier	Element	Change
	UNA			New segment

SKANSKA SVERIGE AB

UN/EDIFACT Message: Segment details

2	NAD	BY	C082	Status changed from "C" to "R"
5	COM			Segment status changed from "R" to "C" in all occurrences.
15, 38	ALC	PN	7160	Qualifier "PN" added
15, 38	ALC		1227	Values 1, 2 and 3 added

The following changes has been made between version 1.5 and 1.6

Group	Segment	Qualifier	Element	Change
1	RFF			Updated comments
1	RFF	VN		Qualifier VN added
-	BGM	386	1001	Qualifier 386 added for "a conto"
2	NAD	DP		Qualifier for delivery address added
2	FII	RH	3192	Status changed from "R" to "N"
2	FII			Updated example
3	RFF	AP		Updated comments
15, 33	ALC		1227	Status changed from "R" to "C"
15, 33	ALC			Updated example
15	ALC		7161	Qualifiers added: ABB, CAD, HD, PC
25	PIA			Updated example
25	QTY			Updated comments
25	IMD			Updated comments
43	MOA	124		Status changed from "C" to "R"
48	MOA	9, 79, 125, 131, 165, 176	6345, 6343	Status changed from "R" to "C"
50	MOA	9, 79, 125, 131, 165, 176	6345, 6343	Status changed from "R" to "C"

The following changes has been made between version 1.6 and 1.7

Group	Segment	Qualifier	Element	Change
	FTX	REG	4451	Updated use / Comments

The following changes has been made between version 1.7 and 1.7.1

Group	Segment	Qualifier	Element	Change
				Changes to text in chapter "Implementation of electronic invoices" regarding negative items

SKANSKA SVERIGE AB

UN/EDIFACT Message: Segment details

				and updated chapter "required invoice content"
--	--	--	--	--

The following changes has been made between version 1.7.1 and 1.7.2

Group	Segment	Qualifier	Element	Change
	NAD	BY		Changes to the address information in the example following the segment description.

The following changes has been made between version 1.7.2 and 1.7.3

Group	Segment	Qualifier	Element	Change
25	IMD			Updated Comments

The following changes has been made between version 1.7.3 and 1.7.4

Group	Segment	Qualifier	Element	Change
-	BGM		1001	Document type 386= A conto removed
-	FTX	AAI	4451	Qualifier and comments of it's use removed
25	IMD			Comment removed

The following changes has been made between version 1.7.4 and 1.7.5

Group	Segment	Qualifier	Element	Change
-	FTX			Status changed from Required to Dependent

The following changes has been made between version 1.7.4 and 1.7.6(current)

Group	Segment	Qualifier	Element	Change
9	FTX	REG, SUR, GEN		Inserted comment with maximum allowed characters allowed for REG, GEN and SUR
	IMD		7008	New maximum total characters for total of both 7008 combined
41	FTX	PRD, SUR		Inserted comment with maximum allowed characters allowed for PRD and SUR

SKANSKA SVERIGE AB

UN/EDIFACT Message: Segment details

Segment:

UNA

Seq. No.:
Status:
Counter:

Level: 0
M Max. Occ.: 1

INTERCHANGE DELIMITERS

Name: **INTERCHANGE HEADER**

Description of segment:

UN/EDIFACT		Implementation	
Name	Format	Use / Comments	
Delimiter for element part	Colon sign	:	
Delimiter för data element	Plus sign	+	
Decimal character	Stop	.	
Release character	Question mark	?	
	Space		
Delimiter for segment end	Apostrophe	'	

Comment:

Example:

UNA: + . ? '

SKANSKA SVERIGE AB

UN/EDIFACT Message: Segment details

Segment:

UNB

Seq. No.: 1 Level: 0
 Status: M Max. Occ.: 1
 Counter: 0010

INTERCHANGE HEADER

Name: INTERCHANGE HEADER

Description of segment:

UN/EDIFACT			Implementation	
	Name	St Format	St Format	Use / Comments
UNB				
S001	SYNTAX IDENTIFIER	M	M	
0001	Syntax identifier	M a4	M a4	UNOC
0002	Syntax version number	M n1	M n1	3
S002	INTERCHANGE SENDER	M	M	
0004	Sender Identification	M an..35	M an..35	
0007	Partner identification code qualifier	C an..4	C an..4	
0008	Address for reverse routing	C an..14	C an..14	
S003	INTERCHANGE RECIPIENT	M	M	
0010	Recipient Identification	M an..35	M an..35	7365560339087
0007	Partner identification code qualifier	C an..4	C an..4	14
0014	Routing address	C an..14	C an..14	
S004	DATE/TIME OF PREPARATION	M	M	
0017	Date of preparation	M n6	M n6	
0019	Time of preparation	M n4	M n4	
0020	INTERCHANGE CONTROL REFERENCE	M an..14	M an..14	
S005	RECIPIENT'S REFERENCE, PASSWORD	C	N	not used
0022	Recipient's reference/password	M an..14	M an..14	not used
0025	Recipient's reference/password qualifier	C an2	C an2	not used
0026	APPLICATION REFERENCE	C an..14	N an..14	not used
0029	PROCESSING PRIORITY CODE	C a1	N a1	not used
0031	ACKNOWLEDGEMENT REQUEST	C n1	N n1	not used
0032	COMMUNICATIONS AGREEMENT ID	C an..35	N an..35	not used
0035	TEST INDICATOR	C n1	C n1	1 = test

Comment:

Example:

UNB+UNOC:3+7399753000713:14+7365560339087:14+050113:1215+1+++++1'

SKANSKA SVERIGE AB

UN/EDIFACT Message: Segment details

Segment:

UNH

Seq. No.: 2 Level: 0
 Status: M Max. Occ.: 1
 Counter: 0010

MESSAGE HEADER

Name: MESSAGE HEADER

Description of segment:

UN/EDIFACT			Implementation	
	Name	St Format	St Format	Use / Comments
UNH				
0062	Message reference number	M an..14	M an..14	
S009	MESSAGE IDENTIFIER	M	M	
0065	Message type identifier	M an..6	M an..6	INVOIC = Invoice message
0052	Message type version number	M an..3	M an..3	D = Draft directory
0054	Message type release number	M an..3	M an..3	96A = Version 96A
0051	Controlling agency	M an..2	M an..2	UN = UN/ECE/TRADE/WP.4, United Nations Standard Messages (UNSM)
0057	Association assigned code	C an..6	C an..6	
0068	Common access reference	C an..35	C an..35	
S010	STATUS OF THE TRANSFER	C	N	not used
0070	Sequence message transfer Number	M n..2	N	not used
0073	First/last sequence message transfer indication	C a1	N	not used

Comment:

Example:

UNH+1234+INVOIC:D:96A:UN'

SKANSKA SVERIGE AB

UN/EDIFACT Message: Segment details

Segment: **BGM** Seq. No.: 3 Level: 0 **Beginning of message**
Status: R Max. Occ.: 1
Counter: 0020

Name: Beginning of message

Description of segment:

UN/EDIFACT			Implementation	
	Name	St Format	St Format	Use / Comments
BGM				
C002	Document/message name	C	R	
1001	Document/message name, coded	C an..3	R an..3	Code specifying the document type. 380 = Commercial invoice 381 = Credit note
1131	Code list qualifier	C an..3	N	not used
3055	Code list responsible agency, Coded	C an..3	N	not used
1000	Document/message name	C an..35	N	not used
1004	Document/message number	C an..35	R an..35	Unique identifier of a document.
1225	Message function, coded	C an..3	N	not used
4343	Response type, coded	C an..3	N	not used

Comment:

Example:

BGM+380+53541900'

SKANSKA SVERIGE AB

UN/EDIFACT Message: Segment details

Segment: **DTM** Seq. No.: 4 Level: 1 **Date/time/period**
Status: R Max. Occ.: 35
Counter: 0030

Name: **Date/time/period**

Description of segment:

UN/EDIFACT			Implementation	
	Name	St Format	St Format	Use / Comments
DTM				
C507	Date/time/period	M	M	
2005	Date/time/period qualifier	M an..3	M an..3	
2380	Date/time/period	C an..35	R an..35	137 = Document/message date/time Date, on which a document or signal was Issued.
2379	Date/time/period format qualifier	C an..3	R an..3	102 = CCYYMMDD

Comment:

Document/Message Date

Example:

DTM+137:20050113:102'

SKANSKA SVERIGE AB

UN/EDIFACT Message: Segment details

Segment:

DTM

Seq. No.: 5 Level: 1 Date/time/period
Status: D Max. Occ.: 35
Counter: 0030

Name: Delivery date and time

Description of segment:

UN/EDIFACT			Implementation	
	Name	St Format	St Format	Use / Comments
DTM				
C507	Date/time/period	M	M	
2005	Date/time/period qualifier	M an..3	M an..3	
2380	Date/time/period	C an..35	R an..35	35 = Delivery date/time, actual Date, on which a document or signal was Issued.
2379	Date/time/period format qualifier	C an..3	R an..3	
				102 = CCYYMMDD

Comment:

Use this segment if no dispatch note exists.

Example:

DTM+35:20050113:102'

SKANSKA SVERIGE AB

UN/EDIFACT Message: Segment details

Segment: **DTM** Seq. No.: 6 Level: 1 **Date/time/period**
Status: D Max. Occ.: 35
Counter: 0030

Name: Invoice Period Start

Description of segment:

UN/EDIFACT			Implementation	
	Name	St Format	St Format	Use / Comments
DTM				
C507	Date/time/period	M	M	
2005	Date/time/period qualifier	M an..3	M an..3	167 = Charge period start date
2380	Date/time/period	C an..35	R an..35	
2379	Date/time/period format qualifier	C an..3	R an..3	102 = CCYYMMDD

Comment:

Invoice Period Start
Use this segment for periodical invoices

Example:

DTM+167:20050101:102'

SKANSKA SVERIGE AB

UN/EDIFACT Message: Segment details

Segment:

DTM

Seq. No.: 7 Level: 1 Date/time/period
Status: D Max. Occ.: 35
Counter: 0030

Name: Invoice Period End

Description of segment:

UN/EDIFACT			Implementation	
	Name	St Format	St Format	Use / Comments
DTM				
C507	Date/time/period	M	M	
2005	Date/time/period qualifier	M an..3	M an..3	168 = Charge period end date
2380	Date/time/period	C an..35	R an..35	
2379	Date/time/period format qualifier	C an..3	R an..3	102 = CCYMMDD

Comment:

Invoice Period End
Use this segment for periodical invoices

Example:

DTM+168:20050130:102'

SKANSKA SVERIGE AB

UN/EDIFACT Message: Segment details

Segment:

ALI

Seq. No.: 8 Level: 1
Status: D Max. Occ.: 5
Counter: 0050

Additional information

Name: Additional information

Description of segment:

UN/EDIFACT			Implementation	
	Name	St Format	St Format	Use / Comments
ALI				
3239	Country of origin, coded	C an..3	N	not used
9213	Type of duty regime, coded	C an..3	N	not used
4183	Special conditions, coded	C an..3	R an..3	79E = Error in deliver 140 = Return of goods 141 = Rebate of Volume Z01 = Damaged goods
4183	Special conditions, coded	C an..3	N	not used
4183	Special conditions, coded	C an..3	N	not used
4183	Special conditions, coded	C an..3	N	not used
4183	Special conditions, coded	C an..3	N	not used

Comment:

Use this segment together with 381 (Credit note)

Example:

ALI+++140'

SKANSKA SVERIGE AB

UN/EDIFACT Message: Segment details

Segment:

FTX

Seq. No.: 9 Level: 1 **Free text**
 Status: D Max. Occ.: 10
 Counter: 0070

Name: Free text

Description of segment:

UN/EDIFACT			Implementation	
	Name	St Format	St Format	Use / Comments
FTX				
4451	Text subject qualifier	M an..3	R an..3	Use qualifier GEN with information "Innehar F-skattsedel". This information is Required in Sweden by taxation rules. Use qualifier REG with information "Omvänd skattskyldighet för byggtjänster gäller" This information is Required in Sweden by taxation rules. Use qualifier REG for VAT exempt purpose according to 6th invoicing directive. Use this code only between two EU-countries. Max allowed characters for GEN is 50. Max allowed characters for SUR is 250. Max allowed characters for REG is 50. REG = Regulatory information GEN = Entire transaction set SUR = Supplier remarks
4453	Text function, coded	C an..3	N	not used
C107	Text reference	C	N	not used
4441	Free text, coded	M an..3	N	not used
1131	Code list qualifier	C an..3	N	not used
3055	Code list responsible agency, Coded	C an..3	N	not used
C108	Text literal	C	R	
4440	Free text	M an..70	R an..70	A line of plain, non-structured text information.
4440	Free text	C an..70	D an..70	not used
4440	Free text	C an..70	D an..70	not used
4440	Free text	C an..70	D an..70	not used
4440	Free text	C an..70	D an..70	not used
3453	Language, coded	C an..3	D an..3	Code specifying the language name. Use ISO 639-1988

Comment:

Free text containing information or statements as required by legal environment

Example:

FTX+GEN+++Innehar F-skattebevis'

SKANSKA SVERIGE AB

UN/EDIFACT Message: Segment details

Group: **SG1** Status: D Max. Occ.: 99 RFF-DTM

RFF on Line level is Required.
Use this segment when needed

Segment: **RFF** Seq. No.: 10 Level: 1 **Reference**
Status: D Max. Occ.: 1
Counter: 0090

Name: Reference

Description of segment:

UN/EDIFACT			Implementation	
	Name	St Format	St Format	Use / Comments
RFF				
C506	Reference	M	R	
1153	Reference qualifier	M an..3	M an..3	Use qualifier IV only together with Creditnote (381) in BGM 1001. Required in the new EU Invoice directive. Use qualifier CD only together Invoice (380) in BGM 1001. Required in the new EU Invoice directive. Qualifier DQ is not used by Skanska. Use qualifier AAK for följesedelsnummer. DQ = Delivery note number IV = Invoice number ON = Order number (purchase) AAK = Despatch advice number CD = Credit note number VN = Vendors order number
1154	Reference number	C an..35	R an..35	Unique identifier of a document. Synonym: document number or reference number
1156	Line number	C an..6	N	not used
4000	Reference version number	C an..35	N	not used

Comment:

Use IBX order number if possible.

Example:

RFF+ON:123456'

SKANSKA SVERIGE AB

UN/EDIFACT Message: Segment details

Group: **SG1** Status: D Max. Occ.: 99 RFF-DTM
RFF on Line level is Required.
Use this segment when needed

Segment: **DTM** Seq. No.: 11 Level: 2 **Date/time/period**
Status: D Max. Occ.: 5
Counter: 0100

Name: **Date/time/period**

Description of segment:

UN/EDIFACT			Implementation	
	Name	St Format	St Format	Use / Comments
DTM				
C507	Date/time/period	M	M	
2005	Date/time/period qualifier	M an..3	M an..3	171 = Reference date/time
2380	Date/time/period	C an..35	R an..35	
2379	Date/time/period format qualifier	C an..3	R an..3	102 = CCYYMMDD

Comment:

Use this segment DTM if relevant with the reference (RFF) segment above.

Example:

DTM+171:20050220:102'

SKANSKA SVERIGE AB

UN/EDIFACT Message: Segment details

Group: **SG2** Status: R Max. Occ.: 99 NAD BY

Segment: **NAD** Seq. No.: 12 Level: 1 **Name and address**
 Status: M Max. Occ.: 1
 Counter: 0120

Name: Name and address

Description of segment:

UN/EDIFACT		Implementation		
Name	St Format	St Format	Use / Comments	
NAD				
3035	Party qualifier	M an..3	M an..3	BY = Buyer
C082	Party identification details	C	R	
3039	Party id. Identification	M an..35	M an..35	Unique identification of a Buyer party by an ID. 'Organisations nummer'
1131	Code list qualifier	C an..3	N	not used
3055	Code list responsible agency, Coded	C an..3	R an..3	92 = Assigned by buyer or buyer's agent
C058	Name and address	C	C	
3124	Name and address line	M an..35	N	not used
3124	Name and address line	C an..35	N	not used
3124	Name and address line	C an..35	N	not used
3124	Name and address line	C an..35	N	not used
3124	Name and address line	C an..35	N	not used
C080	Party name	C	R	
3036	Party name	M an..35	R an..35	Single text line for specification of a name. Required in the new EU Invoice directive
3036	Party name	C an..35	D an..35	
3036	Party name	C an..35	D an..35	
3036	Party name	C an..35	D an..35	
3036	Party name	C an..35	D an..35	
3045	Party name format, coded	C an..3	N	not used
C059	Street	C	R	
3042	Street and number/p.o. box	M an..35	R an..35	The name that identifies the location of a house or building: usually within a street as part of an address. Required in the new EU Invoice directive
3042	Street and number/p.o. box	C an..35	D an..35	
3042	Street and number/p.o. box	C an..35	D an..35	
3042	Street and number/p.o. box	C an..35	D an..35	
3164	City name	C an..35	R an..35	The name of the city, town, or village of this address. Required in the new EU Invoice directive
3229	Country sub-entity identification	C an..9	N	not used

SKANSKA SVERIGE AB

UN/EDIFACT Message: Segment details

3251	Postcode identification	C an..9	R an..9	The identifier for one or more properties according to the postal service of that country; a group of letters and/or numbers added to the postal address to assist in the sorting of mail. Required in the new EU Invoice directive
3207	Country, coded	C an..3	R an..3	Required in the new EU Invoice directive. Provides the country part of an address using a code. Use ISO3166 two alpha code.

Comment:

Example: ..

NAD+BY+1234567:::92++SKANSKA SVERIGE AB +Box 54+SVEDALA++233 22+SE'

SKANSKA SVERIGE AB

UN/EDIFACT Message: Segment details

Group: **SG3** Status: M Max. Occ.: 9999 RFF

Segment: **RFF** Seq. No.: 13 Level: 2 **Reference**
Status: M Max. Occ.: 1
Counter: 0160

Name: Reference

Description of segment:

UN/EDIFACT			Implementation	
	Name	St Format	St Format	Use / Comments
RFF				
C506	Reference	M	M	
1153	Reference qualifier	M an..3	M an..3	Qualifier VA is Required AP = Account payable number VA = VAT registration number
1154	Reference number	C an..35	R an..35	
1156	Line number	C an..6	N	not used
4000	Reference version number	C an..35	N	not used

Comment:

Example:

RFF+VA:SE5563192201'

SKANSKA SVERIGE AB

UN/EDIFACT Message: Segment details

Group: **SG5** Status: C Max. Occ.: 5 CTA-COM

Segment: **CTA** Seq. No.: 14 Level: 2 **Contact information**
Status: C Max. Occ.: 1
Counter: 0220

Name: Contact information

Description of segment:

UN/EDIFACT		Implementation		
	Name	St Format	St Format	Use / Comments
CTA				
3139	Contact function, coded	C an..3	R an..3	Contact function 'Er referens' PD = Purchasing contact
C056	Department or employee details	C	R	
3413	Department or employee identification	C an..17	N	not used
3412	Department or employee	C an..35	R an..35	

Comment:

Example:

CTA+PD+:SVEN SVENSSON'

SKANSKA SVERIGE AB

UN/EDIFACT Message: Segment details

Group: **SG5** Status: C Max. Occ.: 5 CTA-COM

Segment: **COM** Seq. No.: 15 Level: 3 **Communication contact**
Status: C Max. Occ.: 5
Counter: 0230

Name: Communication contact

Description of segment:

UN/EDIFACT		Implementation		
	Name	St Format	St Format	Use / Comments
COM				
C076	Communication contact	M	R	
3148	Communication number	M an..512	M an..512	Communication number
3155	Communication channel qualifier	M an..3	M an..3	
				EM = Electronic mail TE = Telephone

Comment:

Example:

COM+0734-101555:TE'

SKANSKA SVERIGE AB

UN/EDIFACT Message: Segment details

Group: **SG2** Status: D Max. Occ.: 99 NAD DP

Segment: **NAD** Seq. No.: 12 Level: 1 Name and address
 Status: M Max. Occ.: 1
 Counter: 0120

Name: Name and address

Description of segment:

UN/EDIFACT		Implementation		
Name	St Format	St Format	Use / Comments	
NAD				
3035	Party qualifier	M an..3	M an..3	DP = Delivery party
C082	Party identification details	C	R	
3039	Party id. identification	M an..35	C an..35	Unique identification of a Buyer party by an ID. 'Organisations nummer'
1131	Code list qualifier	C an..3	N	not used
3055	Code list responsible agency, coded	C an..3	N an..3	
C058	Name and address	C	C	92 = Assigned by buyer or buyer's agent
3124	Name and address line	M an..35	N	not used
3124	Name and address line	C an..35	N	not used
3124	Name and address line	C an..35	N	not used
3124	Name and address line	C an..35	N	not used
3124	Name and address line	C an..35	N	not used
C080	Party name	C	R	
3036	Party name	M an..35	C an..35	Single text line for specification of a name. Required in the new EU Invoice directive
3036	Party name	C an..35	D an..35	
3036	Party name	C an..35	D an..35	
3036	Party name	C an..35	D an..35	
3036	Party name	C an..35	D an..35	
3045	Party name format, coded	C an..3	N	not used
C059	Street	C	R	
3042	Street and number/p.o. box	M an..35	R an..35	The name that identifies the location of a house or building: usually within a street as part of an address. Required in the new EU Invoice directive
3042	Street and number/p.o. box	C an..35	D an..35	
3042	Street and number/p.o. box	C an..35	D an..35	
3042	Street and number/p.o. box	C an..35	D an..35	
3164	City name	C an..35	R an..35	The name of the city, town, or village of this address. Required in the new EU Invoice directive
3229	Country sub-entity identification	C an..9	N	not used

SKANSKA SVERIGE AB

UN/EDIFACT Message: Segment details

3251	Postcode identification	C an..9	R an..9	The identifier for one or more properties according to the postal service of that country; a group of letters and/or numbers added to the postal address to assist in the sorting of mail. Required in the new EU Invoice directive
3207	Country, coded	C an..3	R an..3	Required in the new EU Invoice directive. Provides the country part of an address using a code. Use ISO3166 two

SKANSKA SVERIGE AB

UN/EDIFACT Message: Segment details

UN/EDIFACT		Implementation		
Name	St Format	St Format	Use / Comments	
			alpha code.	

Comment:

Example:

NAD+DP+1234567:::92++SKANSKA SVERIGE AB+GATUADDRESS+ORT++83941+SE'

SKANSKA SVERIGE AB

UN/EDIFACT Message: Segment details

Group: **SG2** Status: R Max. Occ.: 99 NAD SE

Segment: **NAD** Seq. No.: 16 Level: 1 **Name and address**
 Status: M Max. Occ.: 1
 Counter: 0120

Name: Name and address

Description of segment:

UN/EDIFACT			Implementation	
	Name	St Format	St Format	Use / Comments
NAD				
3035	Party qualifier	M an..3	M an..3	SE = Seller
C082	Party identification details	C	R	
3039	Party id. identification	M an..35	M an..35	Unique identification of a party by an ID. Organisation Number
1131	Code list qualifier	C an..3	N	not used
3055	Code list responsible agency, coded	C an..3	R an..3	
C058	Name and address	C	N	92 = Assigned by buyer or buyer's agent not used
3124	Name and address line	M an..35	N	not used
3124	Name and address line	C an..35	N	not used
3124	Name and address line	C an..35	N	not used
3124	Name and address line	C an..35	N	not used
3124	Name and address line	C an..35	N	not used
C080	Party name	C	R	
3036	Party name	M an..35	R an..35	Single text line for specification of a name. Required in the new EU Invoice directive
3036	Party name	C an..35	D an..35	
3036	Party name	C an..35	D an..35	
3036	Party name	C an..35	D an..35	
3036	Party name	C an..35	D an..35	
3045	Party name format, coded	C an..3	N	not used
C059	Street	C	R	
3042	Street and number/p.o. box	M an..35	R an..35	The name that identifies the location of a house or building: usually within a street as part of an address. Required in the new EU Invoice directive
3042	Street and number/p.o. box	C an..35	D an..35	
3042	Street and number/p.o. box	C an..35	D an..35	
3042	Street and number/p.o. box	C an..35	D an..35	
3164	City name	C an..35	R an..35	The name of the city, town, or village of this address. Required in the new EU Invoice directive
3229	Country sub-entity identification	C an..9	N	not used

SKANSKA SVERIGE AB

UN/EDIFACT Message: Segment details

3251	Postcode identification	C an..9	R an..9	The identifier for one or more properties according to the postal service of that country; a group of letters and/or numbers added to the postal address to assist in the sorting of mail. Required in the new EU Invoice directive
3207	Country, coded	C an..3	R an..3	Required in the new EU Invoice directive. Provides the country part of an address using a code. Use ISO3166 two

SKANSKA SVERIGE AB

UN/EDIFACT Message: Segment details

UN/EDIFACT		Implementation		
Name	St Format	St Format	Use / Comments	
			alpha code.	

Comment:

Example:

NAD+SE+1234567:::92++AHLSELL AB+ADRESS+STOCKHOLM++117 99+SE '

SKANSKA SVERIGE AB

UN/EDIFACT Message: Segment details

Group: **SG2** Status: R Max. Occ.: 99 NAD SE

Segment: **FII** Seq. No.: 17 Level: 2 **Financial institution information**
 Status: D Max. Occ.: 5
 Counter: 0140

Name: Financial institution information

Description of segment:

UN/EDIFACT			Implementation	
	Name	St Format	St Format	Use / Comments
FII				
3035	Party qualifier	M an..3	M an..3	RH = Seller's financial institution
C078	Account identification	C	R	
3194	Account holder number	C an..35	R an..35	Account number at the financial institution where this account is held.
3192	Account holder name	C an..35	N an..35	Name of the official account holder, as registered with a financial institution.
3192	Account holder name	C an..35	N an..35	
6345	Currency, coded	C an..3	C an..3	
C088	Institution identification	C	N	not used
3433	Institution name identification	C an..11	N	not used
1131	Code list qualifier	C an..3	N	not used
3055	Code list responsible agency, coded	C an..3	N	not used
3434	Institution branch number	C an..17	N	not used
1131	Code list qualifier	C an..3	N	not used
3055	Code list responsible agency, coded	C an..3	N	not used
3432	Institution name	C an..70	N	The name of the financial institution not used
3436	Institution branch place	C an..70	N	not used
3207	Country, coded	C an..3	N	not used

Comment:

Example:

FII+RH+4784000-3'

SKANSKA SVERIGE AB

UN/EDIFACT Message: Segment details

Group: **SG3** Status: R Max. Occ.: 9999 RFF

Segment: **RFF** Seq. No.: 18 Level: 2 **Reference**
Status: M Max. Occ.: 1
Counter: 0160

Name: Reference

Description of segment:

UN/EDIFACT			Implementation	
	Name	St Format	St Format	Use / Comments
RFF				
C506	Reference	M	M	
1153	Reference qualifier	M an..3	M an..3	Qualifier VA is Required VA = VAT registration number AP = Accounts receivable number
1154	Reference number	C an..35	C an..35	
1156	Line number	C an..6	N	not used
4000	Reference version number	C an..35	N	not used

Comment:

Example:

RFF+VA:SE55631921'

SKANSKA SVERIGE AB

UN/EDIFACT Message: Segment details

Group: **SG5** Status: C Max. Occ.: 5 CTA-COM

Segment: **CTA** Seq. No.: 19 Level: 2 **Contact information**
Status: C Max. Occ.: 1
Counter: 0220

Name: Contact information

Description of segment:

UN/EDIFACT			Implementation	
	Name	St Format	St Format	Use / Comments
CTA				
3139	Contact function, coded	C an..3	R an..3	Contact function 'Vår referens' AR = Accounts receivable contact
C056	Department or employee details	C	R	
3413	Department or employee identification	C an..17	N	not used
3412	Department or employee	C an..35	R an..35	

Comment:

Example:

CTA+AR+:Kundskontran'

SKANSKA SVERIGE AB

UN/EDIFACT Message: Segment details

Group: **SG5** Status: C Max. Occ.: 5 CTA-COM

Segment: **COM** Seq. No.: 20 Level: 3 **Communication contact**
Status: C Max. Occ.: 5
Counter: 0230

Name: Communication contact

Description of segment:

UN/EDIFACT			Implementation	
	Name	St Format	St Format	Use / Comments
COM				
C076	Communication contact	M	R	
3148	Communication number	M an..512	M an..512	Communication number
3155	Communication channel qualifier	M an..3	M an..3	
				EM = Electronic mail TE = Telephone

Comment:

Example:

COM+kundreskontran@ahlsell.se:EM'

SKANSKA SVERIGE AB

UN/EDIFACT Message: Segment details

Group: **SG2** Status: D Max. Occ.: 99 NAD FH
 To be used when Required in National Legislation. To be used when Required in National Legislation. Not required for Sweden.

Segment: **NAD** Seq. No.: 21 Level: 1 **Name and address**
 Status: M Max. Occ.: 1
 Counter: 0120

Name: Name and address

Description of segment:

UN/EDIFACT			Implementation	
	Name	St Format	St Format	Use / Comments
NAD				
3035	Party qualifier	M an..3	R an..3	FH = Seller as officially registered
C082	Party identification details	C	C	
3039	Party id. identification	M an..35	M an..35	Unique identification of a party by an ID. Organisation Number
1131	Code list qualifier	C an..3	N	not used
3055	Code list responsible agency, coded	C an..3	N	not used
C058	Name and address	C	R	
3124	Name and address line	M an..35	R an..35	
3124	Name and address line	C an..35	D an..35	
3124	Name and address line	C an..35	D an..35	
3124	Name and address line	C an..35	C an..35	D
3124	Name and address line	C an..35	C an..35	D
C080	Party name	C	N	not used
3036	Party name	M an..35	N	not used
3036	Party name	C an..35	N	not used
3036	Party name	C an..35	N	not used
3036	Party name	C an..35	N	not used
3036	Party name	C an..35	N	not used
3045	Party name format, coded	C an..3	N	not used
C059	Street	C	N	not used
3042	Street and number/p.o. box	M an..35	N	not used
3042	Street and number/p.o. box	C an..35	N	not used
3042	Street and number/p.o. box	C an..35	N	not used
3042	Street and number/p.o. box	C an..35	N	not used
3164	City name	C an..35	N	not used
3229	Country sub-entity identification	C an..9	N	not used
3251	Postcode identification	C an..9	N	not used
3207	Country, coded	C an..3	C an..3	

Comment:

Skanska Sverige AB; 1; 7.6 based on INVOIC / UN D.96A S3

SKANSKA SVERIGE AB

UN/EDIFACT Message: Segment details

Example:

NAD+FH++AHLSELL AB GÖTEBORG'

SKANSKA SVERIGE AB

UN/EDIFACT Message: Segment details

Group: **SG2** Status: D Max. Occ.: 99 NAD FG
To be used when Required in National Legislation. Not required for Sweden.

Segment: **NAD** Seq. No.: 22 Level: 1 **Name and address**
Status: M Max. Occ.: 1
Counter: 0120

Name: Name and address

Description of segment:

UN/EDIFACT		Implementation		
	Name	St Format	St Format	Use / Comments
NAD				
3035	Party qualifier	M an..3	R an..3	FG = Buyer as officially registered
C082	Party identification details	C	C	
3039	Party id. identification	M an..35	M an..35	Unique identification of a party by an ID. Organisation Number
1131	Code list qualifier	C an..3	N	not used
3055	Code list responsible agency, coded	C an..3	N	not used
C058	Name and address	C	R	
3124	Name and address line	M an..35	R an..35	
3124	Name and address line	C an..35	D an..35	
3124	Name and address line	C an..35	D an..35	
3124	Name and address line	C an..35	C an..35	D
3124	Name and address line	C an..35	C an..35	D
C080	Party name	C	N	not used
3036	Party name	M an..35	N	not used
3036	Party name	C an..35	N	not used
3036	Party name	C an..35	N	not used
3036	Party name	C an..35	N	not used
3036	Party name	C an..35	N	not used
3045	Party name format, coded	C an..3	N	not used
C059	Street	C	N	not used
3042	Street and number/p.o. box	M an..35	N	not used
3042	Street and number/p.o. box	C an..35	N	not used
3042	Street and number/p.o. box	C an..35	N	not used
3042	Street and number/p.o. box	C an..35	N	not used
3164	City name	C an..35	N	not used
3229	Country sub-entity identification	C an..9	N	not used
3251	Postcode identification	C an..9	N	not used
3207	Country, coded	C an..3	C an..3	

Comment:

Skanska Sverige AB; 1; 7.6 based on INVOIC / UN D.96A S3

Document Number
Generated by GEFEG EDIFIX®

36

Issue: 1.7.6

Dated: 2011-01-14

SKANSKA SVERIGE AB

UN/EDIFACT Message: Segment details

Example:

NAD+FG++SKANSKA AB STOCKHOLM'

SKANSKA SVERIGE AB

UN/EDIFACT Message: Segment details

Group: **SG7** Status: R Max. Occ.: 5 CUX-DTM
Required in the new EU Invoice directive

Segment: **CUX** Seq. No.: 23 Level: 1 **Currencies**
Status: R Max. Occ.: 1
Counter: 0290

Name: Currencies

Description of segment:

UN/EDIFACT			Implementation	
	Name	St Format	St Format	Use / Comments
CUX				
C504	Currency details	C	R	
6347	Currency details qualifier	M an..3	M an..3	2 = Reference currency
6345	Currency, coded	C an..3	R an..3	Use ISO 4217 Three alpha code. Code specifying a monetary unit.
6343	Currency qualifier	C an..3	R an..3	4 = Invoicing currency
6348	Currency rate base	C n..4	N	not used
C504	Currency details	C	D	Use when transformation of currency are necessary
6347	Currency details qualifier	M an..3	M an..3	
6345	Currency, coded	C an..3	R an..3	3 = Target currency Use ISO 4217 three alpha code. Code specifying a monetary unit. Use ISO 4217 three alpha code. Target Currency specifies the currency that has to be used for accounting, taxation, or calculation purposes in those cases, when a monetary amount is given in a different currency. Use ISO 4217 3-alpha currency code.
6343	Currency qualifier	C an..3	R an..3	10E = 'Momsvaluta' (1)
6348	Currency rate base	C n..4	N	not used
5402	Rate of exchange	C n..12	D n..12	The rate at which one specified currency is expressed in another specified currency. Currency Conversion Rate
6341	Currency market exchange, coded	C an..3	N	not used

Comment:

Example:

CUX+2:SEK:4' (CUX+2:EUR:4+3:SEK:10E+9.987')

SKANSKA SVERIGE AB

UN/EDIFACT Message: Segment details

Group: **SG7** Status: R Max. Occ.: 5 CUX-DTM
Required in the new EU Invoice directive

Segment: **DTM** Seq. No.: 24 Level: 2 **Date/time/period**
Status: D Max. Occ.: 5
Counter: 0300

Name: Date/time/period

Description of segment:

UN/EDIFACT			Implementation	
	Name	St Format	St Format	Use / Comments
DTM				
C507	Date/time/period	M	R	
2005	Date/time/period qualifier	M an..3	M an..3	
2380	Date/time/period	C an..35	R an..35	134 = Rate of exchange date/time To specify the date, a given exchange rate between two currencies has been calculated (or has been published by other sources).Rate of Exchange Date
2379	Date/time/period format qualifier	C an..3	R an..3	102 = CCYYMMDD

Comment:

Example:

DTM+134:20050220:102'

SKANSKA SVERIGE AB

UN/EDIFACT Message: Segment details

Group: **SG8** Status: D Max. Occ.: 10 PAT-DTM

Segment: **PAT** Seq. No.: 25 Level: 1 **Payment terms basis**
 Status: R Max. Occ.: 1
 Counter: 0320

Name: **Payment terms basis**

Description of segment:

UN/EDIFACT			Implementation	
	Name	St Format	St Format	Use / Comments
PAT				
4279	Payment terms type qualifier	M an..3	M an..3	1 = Basic 3 = Fixed date
C110	Payment terms	C	C	
4277	Terms of payment identification	M an..17	N	not used
1131	Code list qualifier	C an..3	N	not used
3055	Code list responsible agency, coded	C an..3	N	not used
4276	Terms of payment	C an..35	D an..35	Free text Example: '30 dagar'
4276	Terms of payment	C an..35	N	not used
C112	Terms/time information	C	N	not used
2475	Payment time reference, coded	M an..3	N	not used
2009	Time relation, coded	C an..3	N	not used
2151	Type of period, coded	C an..3	N	not used
2152	Number of periods	C n..3	N	not used

Comment:

Example:

PAT+1+:::30 Dagar'

SKANSKA SVERIGE AB

UN/EDIFACT Message: Segment details

Group: **SG8** Status: D Max. Occ.: 10 PAT-DTM

Segment: **DTM** Seq. No.: 26 Level: 2 **Date/time/period**
Status: R Max. Occ.: 5
Counter: 0330

Name: Date/time/period

Description of segment:

UN/EDIFACT			Implementation	
	Name	St Format	St Format	Use / Comments
DTM				
C507	Date/time/period	M	M	
2005	Date/time/period qualifier	M an..3	M an..3	13 = 'Förfallodatum' 13 = Terms net due date
2380	Date/time/period	C an..35	R an..35	
2379	Date/time/period format qualifier	C an..3	R an..3	102 = CCYYMMDD

Comment:

Example:

DTM+13:20050303:102'

SKANSKA SVERIGE AB

UN/EDIFACT Message: Segment details

Group: **SG9** Status: D Max. Occ.: 10 TDT
Use when needed

Segment: **TDT** Seq. No.: 27 Level: 1 **Details of transport**
Status: R Max. Occ.: 1
Counter: 0390

Name: **Details of transport**

Description of segment:

UN/EDIFACT		Implementation		
	Name	St Format	St Format	Use / Comments
TDT				
8051	Transport stage qualifier	M an..3	M an..3	20 = Main-carriage transport
8028	Conveyance reference number	C an..17	N	not used
C220	Mode of transport	C	R	
8067	Mode of transport, coded	C an..3	R an..3	10 = Maritime transport 20 = Rail transport 30 = Road transport 40 = Air transport
8066	Mode of transport	C an..17	D an..17	Free text
C228	Transport means	C	N	not used
8179	Type of means of transport identification	C an..8	N	not used
8178	Type of means of transport	C an..17	N	not used
C040	Carrier	C	N	not used
3127	Carrier identification	C an..17	N	not used
1131	Code list qualifier	C an..3	N	not used
3055	Code list responsible agency, coded	C an..3	N	not used
3128	Carrier name	C an..35	N	not used
8101	Transit direction, coded	C an..3	N	not used
C401	Excess transportation information	C	N	not used
8457	Excess transportation reason, coded	M an..3	N	not used
8459	Excess transportation responsibility, coded	M an..3	N	not used
7130	Customer authorization number	C an..17	N	not used
C222	Transport identification	C	N	not used
8213	Id. of means of transport identification	C an..9	N	not used
1131	Code list qualifier	C an..3	N	not used
3055	Code list responsible agency, coded	C an..3	N	not used
8212	Id. of the means of transport	C an..35	N	not used

Skanska Sverige AB; 1; 7.6 based on INVOIC / UN D.96A S3

Document Number
Generated by GEFEG EDIFIX®

42

Issue: 1.7.6

Dated: 2011-01-14

SKANSKA SVERIGE AB

UN/EDIFACT Message: Segment details

8453	Nationality of means of transport, coded	C an..3	N	not used
8281	Transport ownership, coded	C an..3	N	not used

SKANSKA SVERIGE AB

UN/EDIFACT Message: Segment details

Comment:

Example:

TDT+20++30:Lastbil'

SKANSKA SVERIGE AB

UN/EDIFACT Message: Segment details

Group: **SG12** Status: D Max. Occ.: 5 TOD-LOC
Use when needed

Segment: **TOD** Seq. No.: 28 Level: 1 **Terms of delivery or transport**
Status: R Max. Occ.: 1
Counter: 0470

Name: Terms of delivery or transport

Description of segment:

UN/EDIFACT			Implementation	
	Name	St Format	St Format	Use / Comments
TOD				
4055	Terms of delivery or transport function, coded	C an..3	R an..3	4 = Collected by customer 6 = Delivery condition
4215	Transport charges method of payment, coded	C an..3	N	not used
C100	Terms of delivery or transport	C	C	
4053	Terms of delivery or transport, coded	C an..3	R an..3	HOS = Hämtat olastat säljaren (1) HLS = Hämtat lastat säljaren (1) LOK = Levererat olossat köparen (1) LLK = Levererat lossat köparen (1) LIK = Levererat inburet Köparen (1)
1131	Code list qualifier	C an..3	C an..3	
3055	Code list responsible agency, coded	C an..3	N	not used
4052	Terms of delivery or transport	C an..70	N	not used
4052	Terms of delivery or transport	C an..70	N	not used

Comment:

Example:

TOD+6++LLK'

SKANSKA SVERIGE AB

UN/EDIFACT Message: Segment details

Group: **SG12** Status: D Max. Occ.: 5 TOD-LOC
Use when needed

Segment: **LOC** Seq. No.: 29 Level: 2 **Place/location identification**
Status: D Max. Occ.: 2
Counter: 0480

Name: **Place/location identification**

Description of segment:

UN/EDIFACT		Implementation		
	Name	St Format	St Format	Use / Comments
LOC				
3227	Place/location qualifier	M an..3	M an..3	1 = Place of terms of delivery
C517	Location identification	C	D	
3225	Place/location identification	C an..25	D an..25	UN/LOCODE
1131	Code list qualifier	C an..3	N	not used
3055	Code list responsible agency, coded	C an..3	D an..3	
				6 = UN/ECE (United Nations - Economic Commission for Europe)
3224	Place/location	C an..70	D an..70	Free text
C519	Related location one identification	C	N	not used
3223	Related place/location one identification	C an..25	C an..25	
1131	Code list qualifier	C an..3	N	not used
3055	Code list responsible agency, coded	C an..3	N	not used
3222	Related place/location one	C an..70	N	not used
C553	Related location two identification	C	N	not used
3233	Related place/location two identification	C an..25	N	not used
1131	Code list qualifier	C an..3	N	not used
3055	Code list responsible agency, coded	C an..3	N	not used
3232	Related place/location two	C an..70	N	not used
5479	Relation, coded	C an..3	N	not used

Comment:

You can choose DE 3224 free text or DE 3225 together with DE 3055

Example:

LOC+1+:::Byggplatsen'

SKANSKA SVERIGE AB

UN/EDIFACT Message: Segment details

Group: **SG15** Status: C Max. Occ.: 9999 ALC-SG18-SG19-SG21
Segment: **ALC** Seq. No.: 30 Level: 1 Allowance or charge
 Status: M Max. Occ.: 1
 Counter: 0580

Name: Allowance or charge

Description of segment:

UN/EDIFACT			Implementation	
Name	St Format	St Format	Use / Comments	
ALC				
5463	Allowance or charge qualifier	M an..3	M an..3	A = Allowance C = Charge
C552	Allowance/charge information	C	N	not used
1230	Allowance or charge number	C an..35	D an..35	Use this DE when 7161 = 'PO'
5189	Charge/allowance description, coded	C an..3	N	not used
4471	Settlement, coded	C an..3	N	not used
1227	Calculation sequence indicator, coded	C an..3	C an..3	1 = First step of calculation 2 = Second step of calculation 3 = Third step of calculation 4 = Fourth step of calculation
C214	Special services identification	C	R	
7161	Special services, coded	C an..3	R an..3	If qualifier ABK then use 7160 to explain the reason. ZZ = Expeditionsavgift (1) ZBC = Bonus (1) FC = Freight charge DI = Discount ABK = Miscellaneous PO = Per order charge PN = Pallet charge AAB = Returned goods charges CAD = Certification fee HD = Handling PC = Packing
1131	Code list qualifier	C an..3	N	not used
3055	Code list responsible agency, coded	C an..3	N	not used
7160	Special service	C an..35	D an..35	Use this element to describe allowance and charge element 7161 in plain text
7160	Special service	C an..35	D an..35	

Comment:

Example:

ALC+C+++1+ABK:::försäkring'

SKANSKA SVERIGE AB

UN/EDIFACT Message: Segment details

Group: **SG18** Status: D Max. Occ.: 1 PCD
Use this segment when needed

Segment: **PCD** Seq. No.: 31 Level: 2 **Percentage details**
Status: M Max. Occ.: 1
Counter: 0670

Name: Percentage details

Description of segment:

UN/EDIFACT			Implementation	
	Name	St Format	St Format	Use / Comments
PCD				
C501	Percentage details	M	M	
5245	Percentage qualifier	M an..3	M an..3	1 = Allowance 2 = Charge
5482	Percentage	C n..10	R n..10	Percentage in calculation.
5249	Percentage basis, coded	C an..3	N	not used
1131	Code list qualifier	C an..3	N	not used
3055	Code list responsible agency, coded	C an..3	N	not used

Comment:

Example:

PCD+1:10'

SKANSKA SVERIGE AB

UN/EDIFACT Message: Segment details

Group: **SG19** Status: D Max. Occ.: 2 MOA
Use when needed

Segment: **MOA** Seq. No.: 32 Level: 2 **Monetary amount**
Status: M Max. Occ.: 1
Counter: 0700

Name: **Monetary amount**

Description of segment:

UN/EDIFACT			Implementation	
	Name	St Format	St Format	Use / Comments
MOA				
C516	Monetary amount	M	M	
5025	Monetary amount type qualifier	M an..3	M an..3	8 = Allowance or charge amount
5004	Monetary amount	C n..18	R n..18	Use 2 decimals for amount
6345	Currency, coded	C an..3	N	not used
6343	Currency qualifier	C an..3	N	not used
4405	Status, coded	C an..3	N	not used

Comment:

Example:

MOA+8:20'

SKANSKA SVERIGE AB

UN/EDIFACT Message: Segment details

Group: **SG21** Status: D Max. Occ.: 5 TAX-MOA
 If the invoice contains different Tax rates this segment group is required, in other case use Tax Moa in summary section

Segment: **TAX** Seq. No.: 33 Level: 2 **Duty/tax/fee details**
 Status: R Max. Occ.: 1
 Counter: 0760

Name: Duty/tax/fee details

Description of segment:

UN/EDIFACT			Implementation	
	Name	St Format	St Format	Use / Comments
TAX				
5283	Duty/tax/fee function qualifier	M an..3	M an..3	7 = Tax
C241	Duty/tax/fee type	C	R	
5153	Duty/tax/fee type, coded	C an..3	R an..3	SCN = Special construction tax ENV = Environmental tax VAT = Value added tax
1131	Code list qualifier	C an..3	N	not used
3055	Code list responsible agency, coded	C an..3	N	not used
5152	Duty/tax/fee type	C an..35	N	not used
C533	Duty/tax/fee account detail	C	N	not used
5289	Duty/tax/fee account identification	M an..6	N	not used
1131	Code list qualifier	C an..3	N	not used
3055	Code list responsible agency, coded	C an..3	N	not used
5286	Duty/tax/fee assessment basis	C an..15	N	not used
C243	Duty/tax/fee detail	C	R	
5279	Duty/tax/fee rate identification	C an..7	N	not used
1131	Code list qualifier	C an..3	N	not used
3055	Code list responsible agency, coded	C an..3	N	not used
5278	Duty/tax/fee rate	C an..17	R an..17	
5273	Duty/tax/fee rate basis identification	C an..12	N	not used
1131	Code list qualifier	C an..3	N	not used
3055	Code list responsible agency, coded	C an..3	N	not used
5305	Duty/tax/fee category, coded	C an..3	R an..3	Use code A if tax rate non standard (for Sweden 25%) A = Mixed tax rate B = Transferred (VAT) E = Exempt from tax H = Higher rate S = Standard rate Z = Zero rated goods

Skanska Sverige AB; 1; 7.6 based on INVOIC / UN D.96A S3

SKANSKA SVERIGE AB

UN/EDIFACT Message: Segment details

3446	Party tax identification number	C an..20	N	not used
------	---------------------------------	----------	---	----------

Comment:

SKANSKA SVERIGE AB

UN/EDIFACT Message: Segment details

Example:

TAX+7+VAT+++:::25+S'

SKANSKA SVERIGE AB

UN/EDIFACT Message: Segment details

Group: **SG21** Status: D Max. Occ.: 5 TAX-MOA
 If the invoice contains different Tax rates this segment group is required, in other case use Tax Moa in summary section

Segment: **MOA** Seq. No.: 34 Level: 3 **Monetary amount**
 Status: R Max. Occ.: 1
 Counter: 0770

Name: Monetary amount

Description of segment:

UN/EDIFACT			Implementation	
	Name	St Format	St Format	Use / Comments
MOA				
C516	Monetary amount	M	M	
5025	Monetary amount type qualifier	M an..3	M an..3	124 = Tax amount
5004	Monetary amount	C n..18	R n..18	Use 2 decimals for amount
6345	Currency, coded	C an..3	N	not used
6343	Currency qualifier	C an..3	N	not used
4405	Status, coded	C an..3	N	not used

Comment:

Example:

MOA+124:120'

SKANSKA SVERIGE AB

UN/EDIFACT Message: Segment details

Group: **SG25** Status: R Max. Occ.: 9999999 LIN-PIA-IMD-QTY-ALI-DTM-FTX-SG26-SG28-SG29-SG33-SG38

Segment: **LIN** Seq. No.: 35 Level: 1 **Line item**
 Status: M Max. Occ.: 1
 Counter: 0900

Name: Line item

Description of segment:

UN/EDIFACT			Implementation	
	Name	St Format	St Format	Use / Comments
LIN				
1082	Line item number	C n..6	R n..6	Sequential number generated by the sender to identify a line item within a message. It is recommended to start with value 1 and to increment by 1 for each new line.
1229	Action request/notification, coded	C an..3	N	not used
C212	Item number identification	C	D	
7140	Item number	C an..35	R an..35	Use to give information about EAN article number
7143	Item number type, coded	C an..3	R an..3	EN = International Article Numbering Association (EAN)
1131	Code list qualifier	C an..3	N	not used
3055	Code list responsible agency, coded	C an..3	N	not used
C829	Sub-line information	C	N	not used
5495	Sub-line indicator, coded	C an..3	N	not used
1082	Line item number	C n..6	N	not used
1222	Configuration level	C n..2	N	not used
7083	Configuration, coded	C an..3	N	not used

Comment:

Om EAN artikelnummer ej finns ange endast radnummer i detta segment.

Example:

LIN+1++113042:EN'

SKANSKA SVERIGE AB

UN/EDIFACT Message: Segment details

Group: **SG25** Status: R Max. Occ.: 9999999 LIN-PIA-IMD-QTY-ALI-DTM-FTX-SG26-SG28-SG29-SG33-SG38

Segment: **PIA** Seq. No.: 36 Level: 2 **Additional product id**
 Status: D Max. Occ.: 25
 Counter: 0910

Name: Additional product id

Description of segment:

UN/EDIFACT			Implementation	
	Name	St Format	St Format	Use / Comments
PIA				
4347	Product id. function qualifier	M an..3	M an..3	5 = Product identification
C212	Item number identification	M	M	
7140	Item number	C an..35	R an..35	
7143	Item number type, coded	C an..3	R an..3	
				SA = Supplier's article number
1131	Code list qualifier	C an..3	N	not used
3055	Code list responsible agency, coded	C an..3	N	not used
C212	Item number identification	C	D	Use to give information about buyers article number
7140	Item number	C an..35	R an..35	
7143	Item number type, coded	C an..3	R an..3	
				IN = Buyer's item number
1131	Code list qualifier	C an..3	N	not used
3055	Code list responsible agency, coded	C an..3	N	not used
C212	Item number identification	C	N	not used
7140	Item number	C an..35	N	not used
7143	Item number type, coded	C an..3	N	not used
1131	Code list qualifier	C an..3	N	not used
3055	Code list responsible agency, coded	C an..3	N	not used
C212	Item number identification	C	N	not used
7140	Item number	C an..35	N	not used
7143	Item number type, coded	C an..3	N	not used
1131	Code list qualifier	C an..3	N	not used
3055	Code list responsible agency, coded	C an..3	N	not used
C212	Item number identification	C	N	not used
7140	Item number	C an..35	N	not used
7143	Item number type, coded	C an..3	N	not used
1131	Code list qualifier	C an..3	N	not used

SKANSKA SVERIGE AB

UN/EDIFACT Message: Segment details

3055	Code list responsible agency, coded	C an..3	N	not used
------	--	---------	---	----------

Comment:

Use this segment when needed.

SKANSKA SVERIGE AB

UN/EDIFACT Message: Segment details

Example:

PIA+5+12345:SA'

SKANSKA SVERIGE AB

UN/EDIFACT Message: Segment details

Group: **SG25** Status: R Max. Occ.: 9999999 LIN-PIA-IMD-QTY-ALI-DTM-FTX-SG26-SG28-SG29-SG33-SG38

Segment: **IMD** Seq. No.: 37 Level: 2 **Item description**
 Status: R Max. Occ.: 10
 Counter: 0920

Name: Item description

Description of segment:

UN/EDIFACT			Implementation	
	Name	St Format	St Format	Use / Comments
IMD				
7077	Item description type, coded	C an..3	N	not used
7081	Item characteristic, coded	C an..3	N	not used
C273	Item description	C	R	
7009	Item description identification	C an..17	N	not used
1131	Code list qualifier	C an..3	N	not used
3055	Code list responsible agency, coded	C an..3	N	not used
7008	Item description	C an..35	R an..35	Required in the new EU Invoice directive
7008	Item description	C an..35	D an..35	Maximum allowed characters combined is 50.
3453	Language, coded	C an..3	N	not used
7383	Surface/layer indicator, coded	C an..3	N	not used

Example:

IMD+++:::Kaffe'

SKANSKA SVERIGE AB

UN/EDIFACT Message: Segment details

Group: **SG25** Status: R Max. Occ.: 9999999 LIN-PIA-IMD-QTY-ALI-DTM-FTX-SG26-SG28-SG29-SG33-SG38

Segment: **QTY** Seq. No.: 38 Level: 2 **Quantity**
 Status: R Max. Occ.: 5
 Counter: 0940

Name: Quantity

Description of segment:

UN/EDIFACT			Implementation	
	Name	St Format	St Format	Use / Comments
QTY				
C186	Quantity details	M	M	
6063	Quantity qualifier	M an..3	M an..3	47 = Invoiced quantity 12 = Despatch quantity
6060	Quantity	M n..15	M n..15	47:Invoiced quantity value. Required in the new EU Invoice directive
6411	Measure unit qualifier	C an..3	D an..3	Default PCE. For other qualifiers use 'Bilaga 3'. PCE = Piece

Comment:

Example:

QTY+47:24'

SKANSKA SVERIGE AB

UN/EDIFACT Message: Segment details

Group: **SG25** Status: R Max. Occ.: 9999999 LIN-PIA-IMD-QTY-ALI-DTM-FTX-SG26-SG28-SG29-SG33-SG38

Segment: **ALI** Seq. No.: 39 Level: 2 **Additional information**
Status: D Max. Occ.: 5
Counter: 0960

Name: Additional information

Description of segment:

UN/EDIFACT			Implementation	
	Name	St Format	St Format	Use / Comments
ALI				
3239	Country of origin, coded	C an..3	C an..3	Use ISO 3166-1 two alpha country code.
9213	Type of duty regime, coded	C an..3	N	not used
4183	Special conditions, coded	C an..3	N	not used
4183	Special conditions, coded	C an..3	N	not used
4183	Special conditions, coded	C an..3	N	not used
4183	Special conditions, coded	C an..3	N	not used
4183	Special conditions, coded	C an..3	N	not used

Comment:

Required for articles with origin from outside EU, if any party is within the union.

Example:

ALI+NO'

SKANSKA SVERIGE AB

UN/EDIFACT Message: Segment details

Group: **SG25** Status: R Max. Occ.: 9999999 LIN-PIA-IMD-QTY-ALI-DTM-FTX-SG26-SG28-SG29-SG33-SG38

Segment: **DTM** Seq. No.: 40 Level: 2 **Date/time/period**
Status: D Max. Occ.: 35
Counter: 0970

Name: Date/time/period

Description of segment:

UN/EDIFACT			Implementation	
	Name	St Format	St Format	Use / Comments
DTM				
C507	Date/time/period	M	M	
2005	Date/time/period qualifier	M an..3	M an..3	194 = Start date/time 206 = End date/time 35 = Delivery date/time, actual
2380	Date/time/period	C an..35	R an..35	
2379	Date/time/period format qualifier	C an..3	R an..3	102 = CCYYMMDD

Comment:

Example:

DTM+35:20050111:102'

SKANSKA SVERIGE AB

UN/EDIFACT Message: Segment details

Group: **SG25** Status: R Max. Occ.: 9999999 LIN-PIA-IMD-QTY-ALI-DTM-FTX-SG26-SG28-SG29-SG33-SG38

Segment: **FTX** Seq. No.: 41 Level: 2 **Free text**
 Status: D Max. Occ.: 5
 Counter: 1020

Name: Free text

Description of segment:

UN/EDIFACT			Implementation	
	Name	St Format	St Format	Use / Comments
FTX				Maximum allowed characters for PRD is 395. Maximum allowed characters for SUR is 240.
4451	Text subject qualifier	M an..3	M an..3	PRD = Product information SUR = Supplier remarks
4453	Text function, coded	C an..3	N	not used
C107	Text reference	C	N	not used
4441	Free text, coded	M an..3	N	not used
1131	Code list qualifier	C an..3	N	not used
3055	Code list responsible agency, coded	C an..3	N	not used
C108	Text literal	C	R	
4440	Free text	M an..70	R an..70	
4440	Free text	C an..70	D an..70	
4440	Free text	C an..70	D an..70	
4440	Free text	C an..70	D an..70	
4440	Free text	C an..70	D an..70	
3453	Language, coded	C an..3	N	not used

Comment:

Use this segment when needed.

Example:

'FTX+PRD+++Kaffe Gevalia 500G'

SKANSKA SVERIGE AB

UN/EDIFACT Message: Segment details

Group: **SG26** Status: R Max. Occ.: 5 MOA

Segment: **MOA** Seq. No.: 42 Level: 2 **Monetary amount**
 Status: R Max. Occ.: 1
 Counter: 1040

Name: Monetary amount

Description of segment:

UN/EDIFACT			Implementation	
	Name	St Format	St Format	Use / Comments
MOA				
C516	Monetary amount	M	R	
5025	Monetary amount type qualifier	M an..3	M an..3	
5004	Monetary amount	C n..18	R n..18	203 = Line item amount Total Sum charged in respect of a single Invoice item in accordance with the terms of delivery. The Line item amount is the total to this line item (price * quantity). It includes allowances, charges and excludes VAT. Use 2 decimals for amount
6345	Currency, coded	C an..3	N	not used
6343	Currency qualifier	C an..3	N	not used
4405	Status, coded	C an..3	N	not used

Comment:

Total Sum charged in respect of a single Invoice item in accordance with the terms of delivery. The Line item amount is the total to this line item (price * quantity). It includes rebates, additions and excludes VAT.

Example:

MOA+203:517,44'

SKANSKA SVERIGE AB

UN/EDIFACT Message: Segment details

Group: **SG28** Status: R Max. Occ.: 25 PRI

Segment: **PRI** Seq. No.: 43 Level: 2 **Price details**
 Status: R Max. Occ.: 1
 Counter: 1120

Name: Price details

Description of segment:

UN/EDIFACT			Implementation	
	Name	St Format	St Format	Use / Comments
PRI				
C509	Price information	C	R	
5125	Price qualifier	M an..3	M an..3	Price without allowances and charges, this represents the gross price applicable to the line. This must be Skanska order price. AAB = Calculation gross price (1)
5118	Price	C n..15	R n..15	Use 2 decimals for price
5375	Price type, coded	C an..3	N	not used
5387	Price type qualifier	C an..3	N	not used
5284	Unit price basis	C n..9	D n..9	Basis on which which the unit price/rate applies. The values 1,100,1000 are approved. Default value is 1.
6411	Measure unit qualifier	C an..3	D an..3	Code specifying the unit of measurement. Recommended use UN/ECE Recommendation 20.
5213	Sub-line price change, coded	C an..3	N	not used

Comment:

Price without allowances and charges, this represents the gross price applicable to the line. This must be Skanska order price.

Example:

PRI+AAB:21,56'

SKANSKA SVERIGE AB

UN/EDIFACT Message: Segment details

Group: **SG29** Status: R Max. Occ.: 10 RFF-DTM

Segment: **RFF** Seq. No.: 44 Level: 2 **Reference**
 Status: R Max. Occ.: 1
 Counter: 1170

Name: Reference

Description of segment:

UN/EDIFACT			Implementation	
	Name	St Format	St Format	Use / Comments
RFF				
C506	Reference	M	R	
1153	Reference qualifier	M an..3	M an..3	ADE: Required 'Konto sträng' ADE = Account number ON = Order number (purchase) AAK = Despatch advice number
1154	Reference number	C an..35	R an..35	ADE: Required 'Projektnummer (5-6 siffror) - Aktivitet (1-15 siffror/tecken) - Resurs (4 siffror)' Example: 123456-010-7716 'Projektnummer: identifierar vilken arbetsplats Aktivitet: används för underindelning av projekt för att möjliggöra kostnads-/ resultatuppföljning (minst en siffra) Resurs: en resurs pekar på vilken typ av kostnad som används t.ex. material, maskiner, underentreprenad.'
1156	Line number	C an..6	N	not used
4000	Reference version number	C an..35	N	not used

Comment:

Example:

RFF+ADE:123456-010-7716'

SKANSKA SVERIGE AB

UN/EDIFACT Message: Segment details

Group: **SG29** Status: R Max. Occ.: 10 RFF-DTM

Segment: **DTM** Seq. No.: 45 Level: 3 **Date/time/period**
Status: D Max. Occ.: 5
Counter: 1180

Name: **Date/time/period**

Description of segment:

UN/EDIFACT			Implementation	
	Name	St Format	St Format	Use / Comments
DTM				
C507	Date/time/period	M	M	
2005	Date/time/period qualifier	M an..3	M an..3	171 = Reference date/time
2380	Date/time/period	C an..35	R an..35	
2379	Date/time/period format qualifier	C an..3	R an..3	102 = CCYYMMDD

Comment:

Use this segment together with RFF qualifier AAK

Example:

SKANSKA SVERIGE AB

UN/EDIFACT Message: Segment details

Group: **SG33** Status: D Max. Occ.: 99 TAX-MOA

If the invoice contains different Tax rates this segment group is required, in other case use Tax Moa in summary section

Segment: **TAX** Seq. No.: 46 Level: 2 **Duty/tax/fee details**
 Status: R Max. Occ.: 1
 Counter: 1320

Name: Duty/tax/fee details

Description of segment:

UN/EDIFACT			Implementation	
	Name	St Format	St Format	Use / Comments
TAX				
5283	Duty/tax/fee function qualifier	M an..3	R an..3	7 = Tax
C241	Duty/tax/fee type	C	R	
5153	Duty/tax/fee type, coded	C an..3	R an..3	VAT = Value added tax SCN = Special construction tax ENV = Environmental tax
1131	Code list qualifier	C an..3	N	not used
3055	Code list responsible agency, coded	C an..3	N	not used
5152	Duty/tax/fee type	C an..35	N	not used
C533	Duty/tax/fee account detail	C	N	not used
5289	Duty/tax/fee account identification	M an..6	N	not used
1131	Code list qualifier	C an..3	N	not used
3055	Code list responsible agency, coded	C an..3	N	not used
5286	Duty/tax/fee assessment basis	C an..15	N	not used
C243	Duty/tax/fee detail	C	R	
5279	Duty/tax/fee rate identification	C an..7	N	not used
1131	Code list qualifier	C an..3	N	not used
3055	Code list responsible agency, coded	C an..3	N	not used
5278	Duty/tax/fee rate	C an..17	R an..17	Rate (percentage) of the specified tax.
5273	Duty/tax/fee rate basis identification	C an..12	N	not used
1131	Code list qualifier	C an..3	N	not used
3055	Code list responsible agency, coded	C an..3	N	not used
5305	Duty/tax/fee category, coded	C an..3	R an..3	Use code A if tax rate non standard (for Sweden 25%) B = Transferred (VAT) E = Exempt from tax S = Standard rate A = Mixed tax rate H = Higher rate Z = Zero rated goods

Skanska Sverige AB; 1; 7.6

based on INVOIC / UN D.96A S3

Document Number

67

Issue: 1.7.6

Dated: 2011-01-14

Generated by GEFEG EDIFIX®

SKANSKA SVERIGE AB

UN/EDIFACT Message: Segment details

3446	Party tax identification number	C an..20	N	not used
------	---------------------------------	----------	---	----------

Comment:

SKANSKA SVERIGE AB

UN/EDIFACT Message: Segment details

Example:

TAX+7+VAT+++:::25+S'

SKANSKA SVERIGE AB

UN/EDIFACT Message: Segment details

Group: **SG33** Status: D Max. Occ.: 99 TAX-MOA

If the invoice contains different Tax rates this segment group is required, in other case use Tax Moa in summary section

Segment: **MOA** Seq. No.: 47 Level: 3 **Monetary amount**
Status: R Max. Occ.: 1
Counter: 1330

Name: Monetary amount

Description of segment:

UN/EDIFACT		Implementation		
	Name	St Format	St Format	Use / Comments
MOA				
C516	Monetary amount	M	M	
5025	Monetary amount type qualifier	M an..3	R an..3	124 = Tax amount
5004	Monetary amount	C n..18	R n..18	Use 2 decimals for amount
6345	Currency, coded	C an..3	N	not used
6343	Currency qualifier	C an..3	N	not used
4405	Status, coded	C an..3	N	not used

Comment:

Example:

MOA+124:129'

SKANSKA SVERIGE AB

UN/EDIFACT Message: Segment details

Group: **SG38** Status: D Max. Occ.: 15 ALC-SG40-SG41-SG43
Segment: **ALC** Seq. No.: 48 Level: 2 Allowance or charge
 Status: D Max. Occ.: 1
 Counter: 1480

Name: Allowance or charge

Description of segment:

UN/EDIFACT			Implementation	
Name	St Format	St Format	Use / Comments	
ALC				
5463	Allowance or charge qualifier	M an..3	R an..3	Allowance/Charge Qualifier C = Charge A = Allowance
C552	Allowance/charge information	C	N	not used
1230	Allowance or charge number	C an..35	N	not used
5189	Charge/allowance description, coded	C an..3	N	not used
4471	Settlement, coded	C an..3	N	not used
1227	Calculation sequence indicator, coded	C an..3	C an..3	1 = First step of calculation 2 = Second step of calculation 3 = Third step of calculation 4 = Fourth step of calculation
C214	Special services identification	C	R	
7161	Special services, coded	C an..3	R an..3	Code specifying a special service. If qualifier ABK then use 7160 to explain the reason. CL = Contract allowance ACC = Miscellaneous setting costs (tooling) ACK = Polishing ACS = Fitting surcharge ABK = Miscellaneous PAE = Promotional discount FC = Freight charge PC = Packing DI = Discount PAE = Promotional discount PN = Pallet charge ZDG = Rebategroup (1) PDE = Palletrebate (1)
1131	Code list qualifier	C an..3	N	not used
3055	Code list responsible agency, coded	C an..3	N	not used
7160	Special service	C an..35	D an..35	Use this element to describe allowance and charge element 7161 in plain text
7160	Special service	C an..35	D an..35	

Comment:

Use this segment when needed.

Example:

ALC+C+++1+ABK::försäkring'

Skanska Sverige AB; 1; 7.6 based on INVOIC / UN D.96A S3

Document Number

71

Issue: 1.7.6

Dated: 2011-01-14

Generated by GEFEG EDIFIX®

SKANSKA SVERIGE AB

UN/EDIFACT Message: Segment details

Group: **SG40** Status: D Max. Occ.: 1 PCD
Use this segment when needed.

Segment: **PCD** Seq. No.: 49 Level: 3 **Percentage details**
Status: M Max. Occ.: 1
Counter: 1550

Name: Percentage details

Description of segment:

UN/EDIFACT			Implementation	
	Name	St Format	St Format	Use / Comments
PCD				
C501	Percentage details	M	M	
5245	Percentage qualifier	M an..3	R an..3	1 = Allowance 2 = Charge
5482	Percentage	C n..10	R n..10	Percentage in calculation.
5249	Percentage basis, coded	C an..3	N	not used
1131	Code list qualifier	C an..3	N	not used
3055	Code list responsible agency, coded	C an..3	N	not used

Comment:

Example:

PCD+2:10'

SKANSKA SVERIGE AB

UN/EDIFACT Message: Segment details

Group: **SG41** Status: D Max. Occ.: 2 MOA
Use when needed

Segment: **MOA** Seq. No.: 50 Level: 3 **Monetary amount**
Status: M Max. Occ.: 1
Counter: 1580

Name: **Monetary amount**

Description of segment:

UN/EDIFACT		Implementation		
	Name	St Format	St Format	Use / Comments
MOA				
C516	Monetary amount	M	M	
5025	Monetary amount type qualifier	M an..3	R an..3	8 = Allowance or charge amount
5004	Monetary amount	C n..18	R n..18	Use 2 decimals for amount
6345	Currency, coded	C an..3	N	not used
6343	Currency qualifier	C an..3	N	not used
4405	Status, coded	C an..3	N	not used

Comment:

Example:

MOA+8 : 28 '

SKANSKA SVERIGE AB

UN/EDIFACT Message: Segment details

Group: **SG43** Status: D Max. Occ.: 5 TAX-MOA

Use when needed

If the invoice contains different Tax rates this segment group is required, in other case use Tax Moa in summary section

Segment: **TAX** Seq. No.: 51 Level: 3 **Duty/tax/fee details**
 Status: M Max. Occ.: 1
 Counter: 1640

Name: Duty/tax/fee details

Description of segment:

UN/EDIFACT			Implementation	
	Name	St Format	St Format	Use / Comments
TAX				
5283	Duty/tax/fee function qualifier	M an..3	R an..3	7 = Tax
C241	Duty/tax/fee type	C	R	
5153	Duty/tax/fee type, coded	C an..3	R an..3	ENV = Environmental tax SCN = Special construction tax VAT = Value added tax
1131	Code list qualifier	C an..3	N	not used
3055	Code list responsible agency, coded	C an..3	N	not used
5152	Duty/tax/fee type	C an..35	N	not used
C533	Duty/tax/fee account detail	C	N	not used
5289	Duty/tax/fee account identification	M an..6	N	not used
1131	Code list qualifier	C an..3	N	not used
3055	Code list responsible agency, coded	C an..3	N	not used
5286	Duty/tax/fee assessment basis	C an..15	N	not used
C243	Duty/tax/fee detail	C	R	
5279	Duty/tax/fee rate identification	C an..7	N	not used
1131	Code list qualifier	C an..3	N	not used
3055	Code list responsible agency, coded	C an..3	N	not used
5278	Duty/tax/fee rate	C an..17	R an..17	Rate (percentage) of the specified tax.
5273	Duty/tax/fee rate basis identification	C an..12	N	not used
1131	Code list qualifier	C an..3	N	not used
3055	Code list responsible agency, coded	C an..3	N	not used
5305	Duty/tax/fee category, coded	C an..3	R an..3	Use code A if tax rate non standard (for Sweden 25%) B = Transferred (VAT) E = Exempt from tax S = Standard rate Z = Zero rated goods A = Mixed tax rate

Skanska Sverige AB; 1; 7.6

based on INVOIC / UN D.96A S3

Document Number

74

Issue: 1.7.6

Dated: 2011-01-14

Generated by GEFEG EDIFIX®

SKANSKA SVERIGE AB

UN/EDIFACT Message: Segment details

3446	Party tax identification number	C an..20	N	not used
------	---------------------------------	----------	---	----------

Comment:

SKANSKA SVERIGE AB

UN/EDIFACT Message: Segment details

Example:

TAX+7+VAT+++:::25+S'

SKANSKA SVERIGE AB

UN/EDIFACT Message: Segment details

Group: **SG43** Status: D Max. Occ.: 5 TAX-MOA

Use when needed

If the invoice contains different Tax rates this segment group is required, in other case use Tax Moa in summary section

Segment: **MOA** Seq. No.: 52 Level: 4 **Monetary amount**
 Status: CMax. Occ.: 1
 Counter: 1650

Name: Monetary amount

Description of segment:

UN/EDIFACT			Implementation	
	Name	St Format	St Format	Use / Comments
MOA				
C516	Monetary amount	M	M	
5025	Monetary amount type qualifier	M an..3	M an..3	
5004	Monetary amount	C n..18	R n..18	124 = Tax amount Use 2 decimals for amount
6345	Currency, coded	C an..3	N	not used
6343	Currency qualifier	C an..3	N	not used
4405	Status, coded	C an..3	N	not used

Comment:

Example:

MOA+124:7'

SKANSKA SVERIGE AB

UN/EDIFACT Message: Segment details

Segment:

UNS

Seq. No.: 53 Level: 0
Status: M Max. Occ.: 1
Counter: 1790

SECTION CONTROL

Name: **SECTION CONTROL**

Description of segment:

UN/EDIFACT		Implementation		
	Name	St Format	St Format	Use / Comments
UNS 0081	Section identification	M a1	M a1	S = Detail/summary section separation

Comment:

Example:

UNS+S'

SKANSKA SVERIGE AB

UN/EDIFACT Message: Segment details

Group: **SG48** Status: R Max. Occ.: 100 MOA

Segment: **MOA** Seq. No.: 54 Level: 1 **Monetary amount**
 Status: R Max. Occ.: 1
 Counter: 1820

Name: **Monetary amount**

Description of segment:

UN/EDIFACT			Implementation	
	Name	St Format	St Format	Use / Comments
MOA				
C516	Monetary amount	M	M	
5025	Monetary amount type qualifier	M an..3	M an..3	Om rabatter överstiger eventuella tillägg anges här ett negativt belopp 131 skall bara användas för att redovisa ALC från huvudnivå annars ingår detta i MOA 203 för ALC på radnivå 9 = Amount due/amount payable 79 = Total line items amount 125 = Taxable amount 131 = Total charges/allowances 165 = Adjustment amount 176 = Message total duty/tax/fee amount
5004	Monetary amount	C n..18	R n..18	Use 2 decimals for amount
6345	Currency, coded	C an..3	C an..3	
6343	Currency qualifier	C an..3	C an..3	
4405	Status, coded	C an..3	N	not used

Comment:

Total sum charged in respect of a single invoice in accordance to predefined agreement.

Example:

SKANSKA SVERIGE AB

UN/EDIFACT Message: Segment details

Group: **SG50** Status: R Max. Occ.: 10 TAX-MOA

This segment group has to be used once for each Tax rate.

Segment: **TAX** Seq. No.: 55 Level: 1 **Duty/tax/fee details**
 Status: R Max. Occ.: 1
 Counter: 1870

Name: Duty/tax/fee details

Description of segment:

UN/EDIFACT			Implementation	
	Name	St Format	St Format	Use / Comments
TAX				
5283	Duty/tax/fee function qualifier	M an..3	R an..3	7 = Tax
C241	Duty/tax/fee type	C	R	
5153	Duty/tax/fee type, coded	C an..3	R an..3	ENV = Environmental tax SCN = Special construction tax VAT = Value added tax
1131	Code list qualifier	C an..3	N	not used
3055	Code list responsible agency, coded	C an..3	N	not used
5152	Duty/tax/fee type	C an..35	N	not used
C533	Duty/tax/fee account detail	C	N	not used
5289	Duty/tax/fee account identification	M an..6	N	not used
1131	Code list qualifier	C an..3	N	not used
3055	Code list responsible agency, coded	C an..3	N	not used
5286	Duty/tax/fee assessment basis	C an..15	N	not used
C243	Duty/tax/fee detail	C	R	
5279	Duty/tax/fee rate identification	C an..7	N	not used
1131	Code list qualifier	C an..3	N	not used
3055	Code list responsible agency, coded	C an..3	N	not used
5278	Duty/tax/fee rate	C an..17	R an..17	
5273	Duty/tax/fee rate basis identification	C an..12	N	not used
1131	Code list qualifier	C an..3	N	not used
3055	Code list responsible agency, coded	C an..3	N	not used
5305	Duty/tax/fee category, coded	C an..3	R an..3	Use code A if tax rate non standard (for Sweden 25%) B = Transferred (VAT) E = Exempt from tax H = Higher rate S = Standard rate Z = Zero rated goods A = Mixed tax rate
3446	Party tax identification number	C an..20	N	not used

Skanska Sverige AB; 1; 7.6 based on INVOIC / UN D.96A S3

SKANSKA SVERIGE AB

UN/EDIFACT Message: Segment details

Comment:

Example:

SKANSKA SVERIGE AB

UN/EDIFACT Message: Segment details

TAX+7+VAT+++:::25+S'

SKANSKA SVERIGE AB

UN/EDIFACT Message: Segment details

Group: **SG50** Status: R Max. Occ.: 10 TAX-MOA

This segment group has to be used once for each Tax rate.

Segment: **MOA** Seq. No.: 56 Level: 2 **Monetary amount**
Status: R Max. Occ.: 2
Counter: 1880

Name: **Monetary amount**

Description of segment:

UN/EDIFACT			Implementation	
	Name	St Format	St Format	Use / Comments
MOA				
C516	Monetary amount	M	R	
5025	Monetary amount type qualifier	M an..3	M an..3	125 = Taxable amount 124 = Tax amount
5004	Monetary amount	C n..18	R n..18	Use 2 decimals for amount
6345	Currency, coded	C an..3	C an..3	
6343	Currency qualifier	C an..3	C an..3	
4405	Status, coded	C an..3	N	not used

Comment:

Example:

MOA+124:120'MOA+125:517.44

SKANSKA SVERIGE AB

UN/EDIFACT Message: Segment details

Segment:

UNT

Seq. No.: 57 Level: 0
Status: M Max. Occ.: 1
Counter: 1930

MESSAGE TRAILER

Name: **MESSAGE TRAILER**

Description of segment:

UN/EDIFACT		Implementation		
	Name	St Format	St Format	Use / Comments
UNT				
0074	Number of segments in a message	M n..6	M n..6	
0062	Message reference number	M an..14	M an..14	

Comment:

Example:

UNT+48+6'

SKANSKA SVERIGE AB

UN/EDIFACT Message: Segment details

Segment: **UNZ** Seq. No.: 58 Level: 0 **INTERCHANGE TRAILER**
Status: M Max. Occ.: 1
Counter: 0000

Name: INTERCHANGE TRAILER

Description of segment:

UN/EDIFACT		Implementation		
	Name	St Format	St Format	Use / Comments
UNZ				
0036	Interchange control count	M n..6	M n..6	
0020	Interchange control reference	M an..14	M an..14	

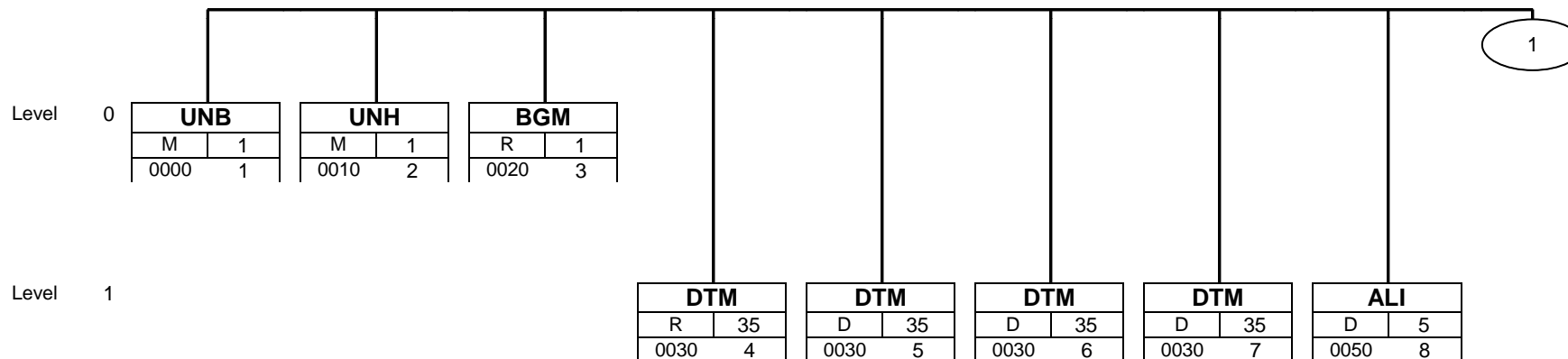
Comment:

Example:

UNZ+1+ABCD'

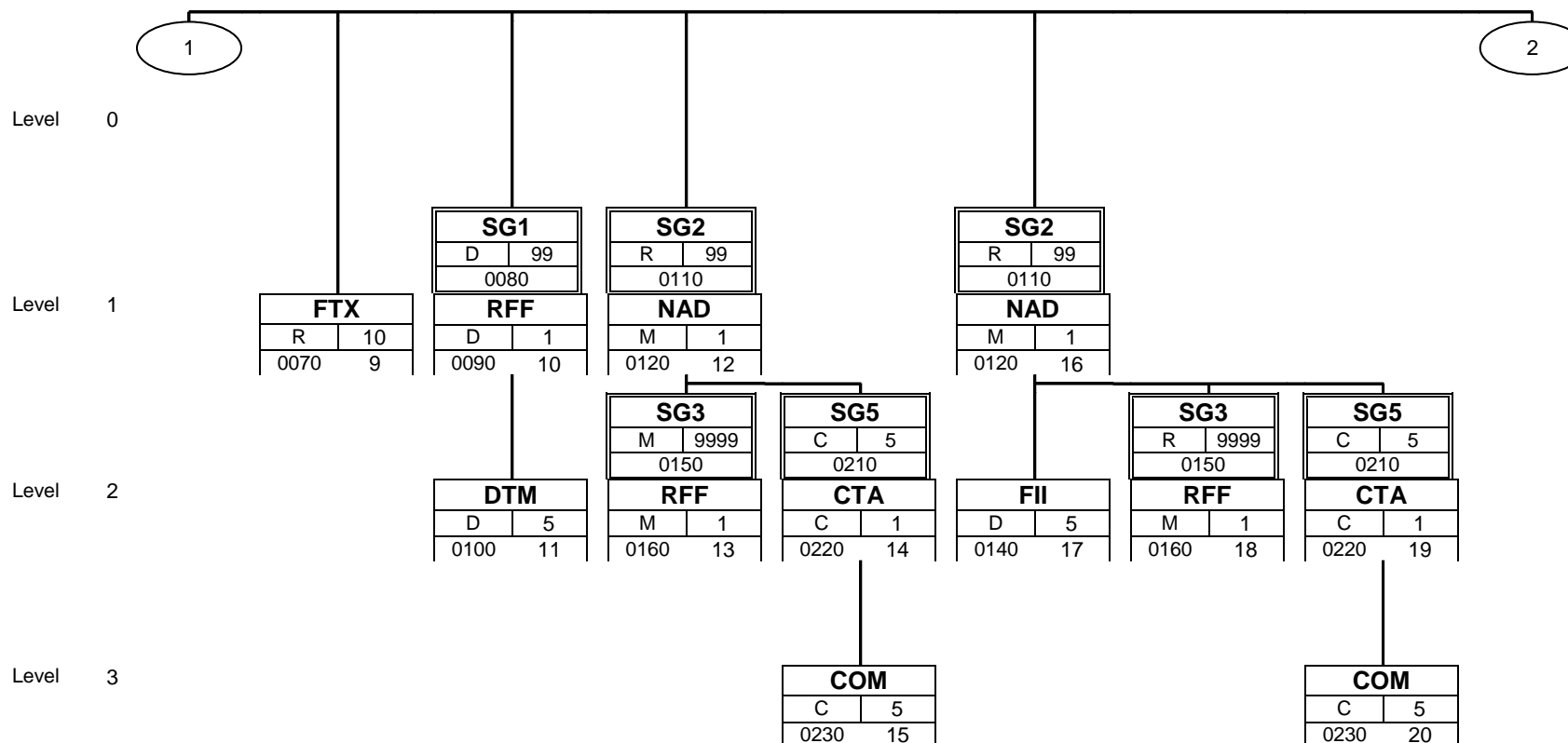
SKANSKA SVERIGE AB

UN/EDIFACT Message: Branching diagram of used segments and segment groups



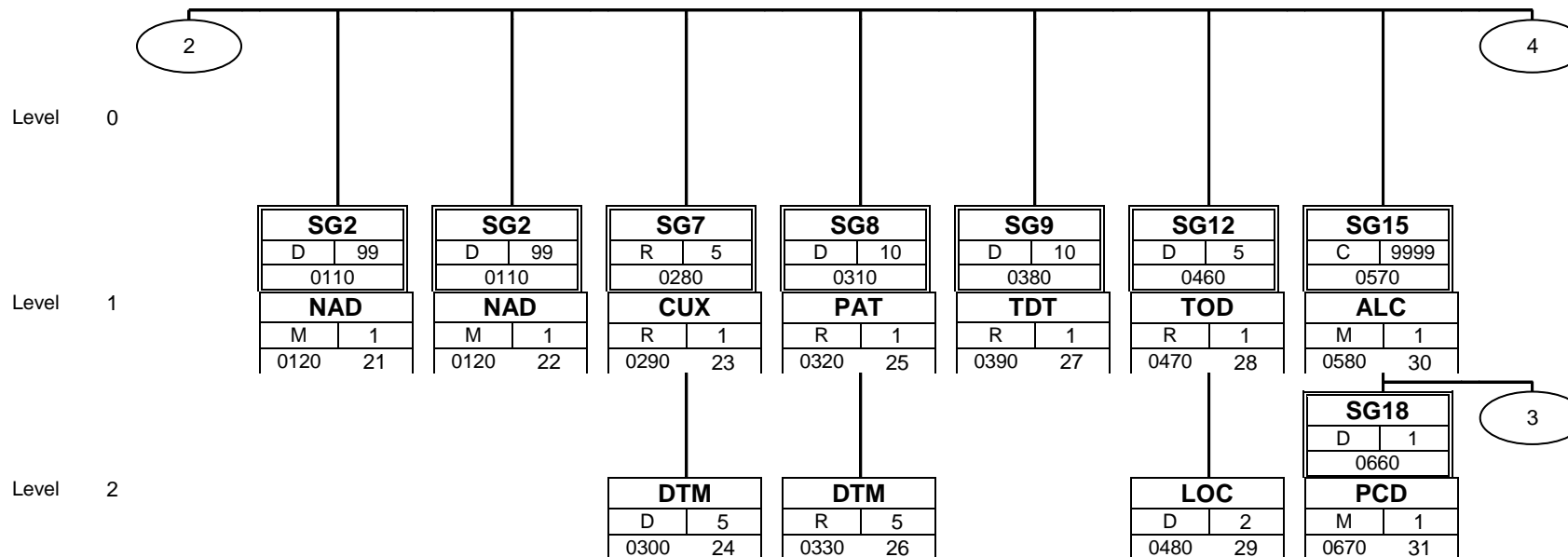
SKANSKA SVERIGE AB

UN/EDIFACT Message: Branching diagram of used segments and segment groups



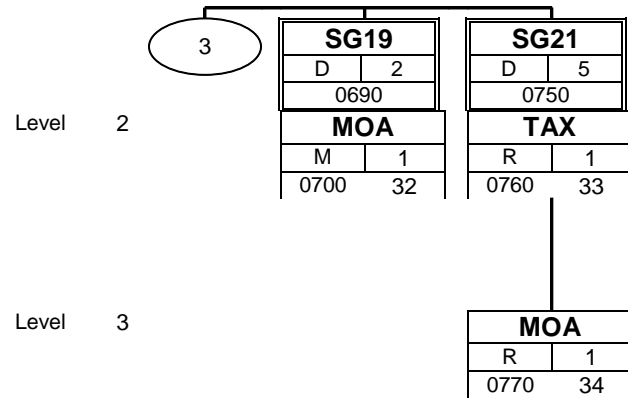
SKANSKA SVERIGE AB

UN/EDIFACT Message: Branching diagram of used segments and segment groups



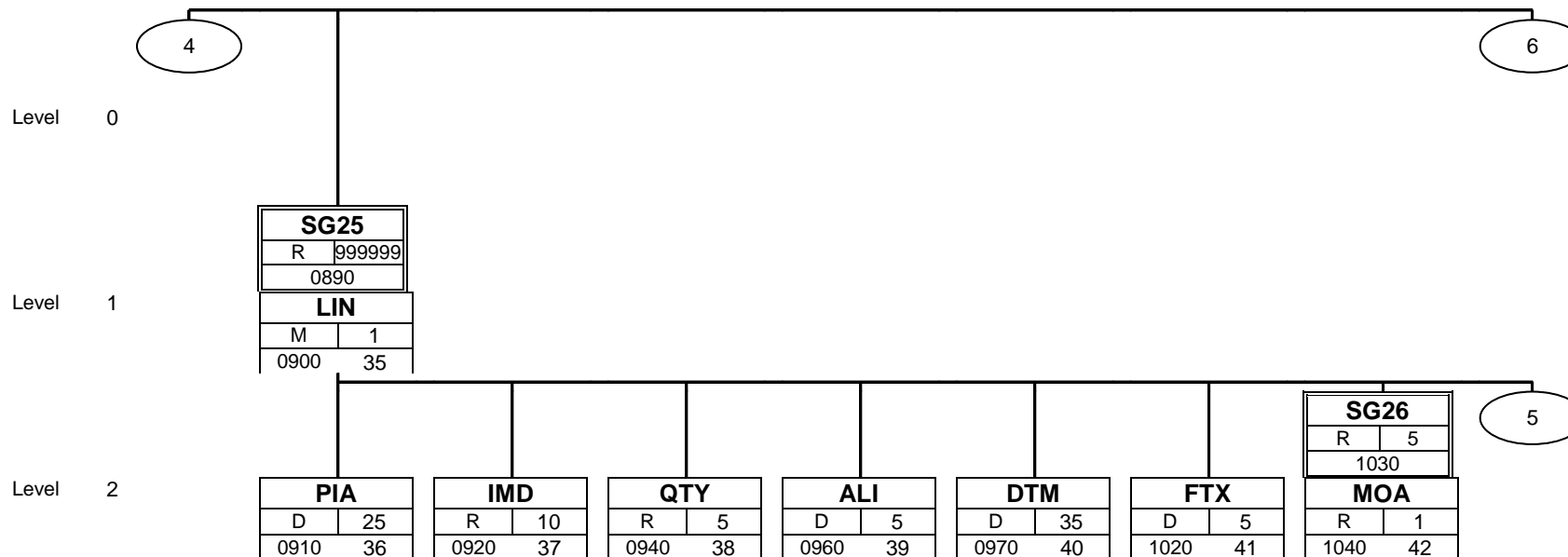
SKANSKA SVERIGE AB

UN/EDIFACT Message: Branching diagram of used segments and segment groups



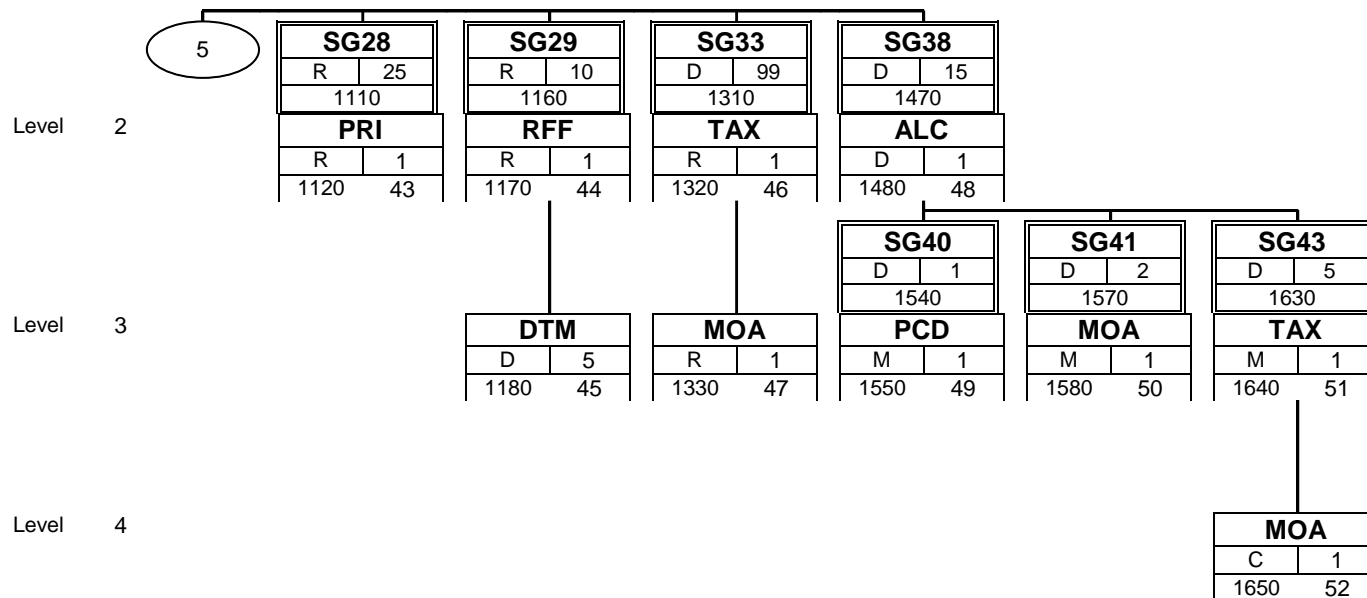
SKANSKA SVERIGE AB

UN/EDIFACT Message: Branching diagram of used segments and segment groups



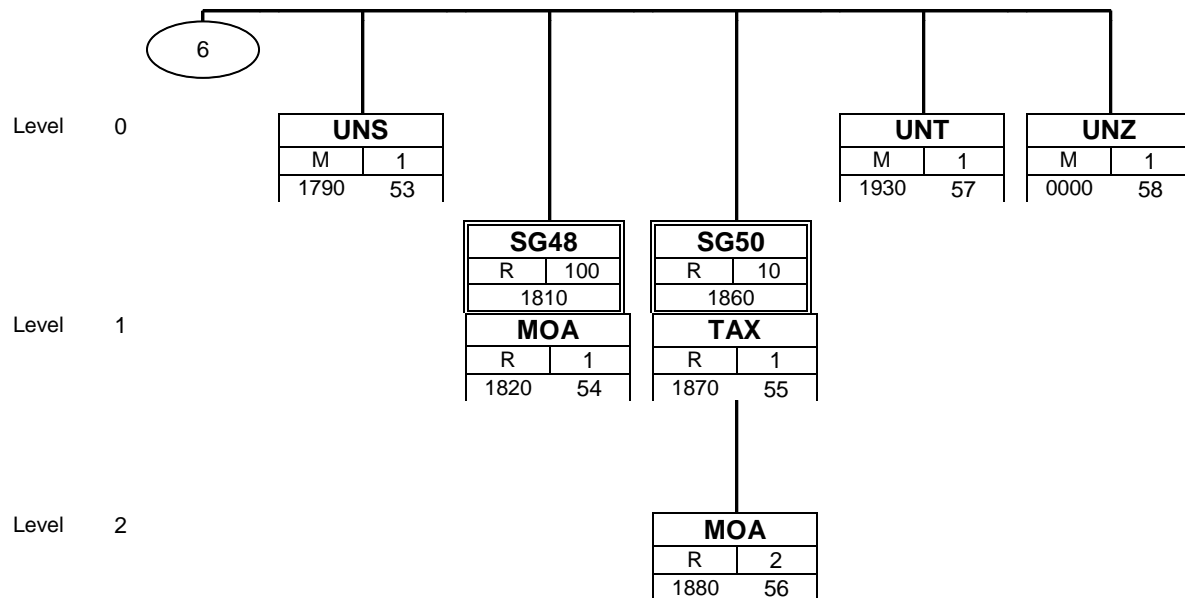
SKANSKA SVERIGE AB

UN/EDIFACT Message: Branching diagram of used segments and segment groups



SKANSKA SVERIGE AB

UN/EDIFACT Message: Branching diagram of used segments and segment groups



Examples of measurements used in element 6311, dimensional specifications

Length

“MMT” = Millimetre
 “CMT” = Centimetre
 “DMT” = Decimetre
 “MTR” = Meter
 “HMT” = Hectometre
 ”KMT” = Kilometre

Surface

”MMK” = Square millimetre
 ”CMK” = Square centimetre
 ”DMK” = Square decimetre
 “MTK” = Square meter
 “KMK” = Square kilometre
 “HAR” = Hectare

Volume / Capacity

”MMQ” = Cubic millimetre
 ”CMQ” = Cubic centimetre
 “DMQ” = Cubic decimetre
 “MTQ” = Cubic meter
 “MLT” = Millilitre
 “CLT” = Centilitre
 “DLT” = Decilitre
 “LTR” = Litre
 ”B4” = Barrel (UK measure)
 ”BLL” = Barrel (US measure)
 “ZTF” = Theoretical fixed volume
 in m³
 “ZVF” = Actual fixed volume in
 m³
 “ZVL” = Actual loose volume in
 m³
 “ZTA” = Theoretical emplaced
 volume in m³
 “ZVA” = Actual emplaced volume
 in m³

Time

“SEC” = Second
 “MIN” = Minute
 “HUR” = Hour
 “DAY” = Day

Flow

“MQH” = m³ per hour

Pressure / Load

“PAL” = Pascal
 “BAR” = Bar
 “ATM” = Atmosphere, standard

Weight / Mass

“MGM” = Milligram
 “GRM” = Gram
 “HGM” = Hectogram
 “KGM” = Kilogram
 “TNE” = Ton (metric)
 “KTN” = Kiloton

Quantity / Number

“PCE” = Pieces
 “PC” = Package
 “CEN” = Hundred
 “MIL” = Thousand
 “MIO” = Million
 “MLD” = Billion (10⁹, thousand
 million)
 “BIL” = 10¹²
 “TRL” = 10¹⁸

Acceleration

“MSK” = Meter/sec²

Density

“KMQ” = kg/m³

Electricity

“AMP” = Ampere
 “AMH” = Ampere hour
 “VLT” = Volt
 “OHM” = Ohm
 “WTT” = Watt (also power
 generation)
 “KWT” = Kilowatt (-“-)
 “MAW” = Megawatt (-“-)
 “KVA” = Kilovolt ampere
 ”MVA” = Megavolt ampere

Frequency / rotation

”HTZ” = Hertz
 ”RPS” = Rotations per second

Temperature

“KEL” = Kelvin
 “CEL” = Celcius

Force

“NEW” = Newton

Energy

“JOU” = Joule
 “KJO” = Kilo joule
 “WHR” = Watt hour
 “KWH” = Kilowatt hour
 “MWH” = Megawatt hour
 “GWH” = Gig watt hour

Velocity

“KMH” = Kilometre per hour
 “MTS” = Meter per second

Trade quantity

“NPR” = No of pairs
 “NRL” = No of bales
 “SET” = Set
 “ST” = Leaf, Sheet
 “BL” = Bale
 “BE” = Bundle
 “JAR” = Jar
 “TIN” = Tin
 ”BX” = Box
 ”CA” = Carton
 ”CAN” = Can
 “Z3” = Barrel
 “BO” = Bottle
 “BJ” = Bucket
 “AV” = Capsule
 ”CG” = Pack, Map
 ”CT” = Carton
 “ZLM” = Running metre
 “CQ” = Cartridge
 “PF” = Pallet
 “PA” = Package
 “BG” = Bag
 “RG” = Ring
 ”ZSB” = SB pack
 ”SA” = Sack
 ”PG” = Sheet
 ”SO” = Spool, Bobbin
 ”RA” = Rack
 ”TU” = Tube
 “LN” = Length
 “ZZ” = Agreed